



Sine wave output filters

FIN 905SF

FIN 915SFH

Converts the PWM output signal into a sinusoidal shape with residual < 5% dV/dt reduction

Reduces motor loss due to high frequency

Increases motor life

Compact style

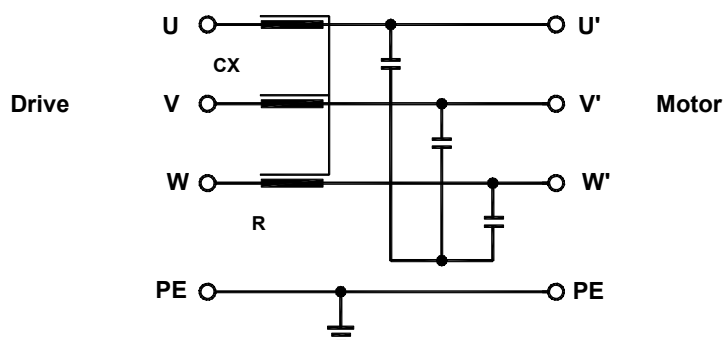
High speed motors application (FIN915SFH series)

Low heating for high frequencies application (FIN915SFH series)

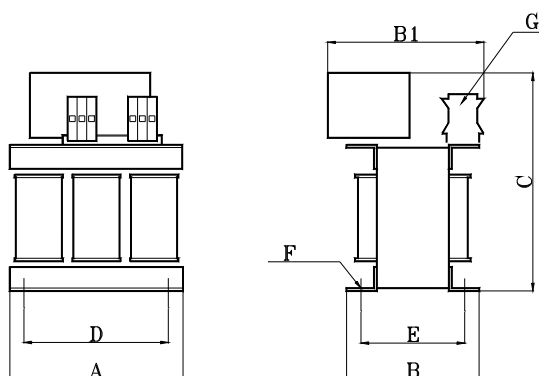
Ventilation not needed for high speed application

Electrical characteristics

| | |
|--|----------------------------|
| Nominal voltage | 400 V _{AC} - |
| Nominal current at ambient temperature of 40°C | See table |
| Test voltage (phase to phase) | 2100 V _{DC} (2 s) |
| Test voltage (phase to ground) | 3000 V _{DC} (2 s) |
| Motor frequency for FIN905SF | 70 Hz |
| Motor frequency for FIN915SFH | < 1 kHz |



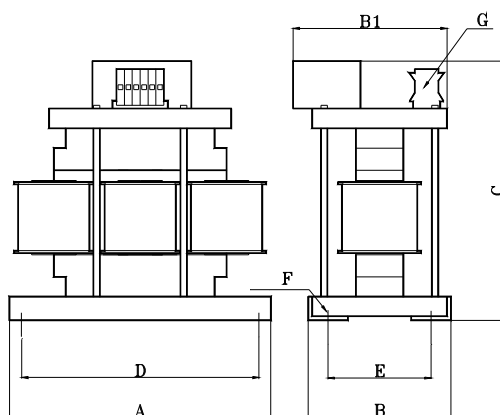
FIN905SF Mechanical characteristics



| Model | A | B | B1 | C | D | E | F | G |
|----------------|-----|-----|-----|-----|-----|-----|------|-----|
| FIN905SF.008.M | 200 | 130 | 160 | 240 | 170 | 60 | Ø 8 | K10 |
| FIN905SF.016.M | 200 | 155 | 180 | 240 | 170 | 85 | Ø 8 | K10 |
| FIN905SF.032.M | 200 | 180 | 180 | 240 | 170 | 110 | Ø 8 | K10 |
| FIN905SF.050.M | 260 | 200 | 220 | 280 | 220 | 150 | Ø 8 | K35 |
| FIN905SF.075.M | 260 | 225 | 220 | 280 | 220 | 175 | Ø 8 | K35 |
| FIN905SF.100.M | 300 | 200 | 220 | 330 | 270 | 130 | Ø 10 | K35 |
| FIN905SF.150.M | 360 | 220 | 260 | 400 | 320 | 150 | Ø 10 | K50 |
| FIN905SF.200.M | 360 | 260 | 290 | 410 | 320 | 190 | Ø 10 | K95 |
| FIN905SF.250.M | 420 | 260 | 290 | 410 | 320 | 190 | Ø 10 | K95 |

Dimensions in mm

FIN915SFH Mechanical characteristics



| Model | A | B | B1 | C | D | E | F | G |
|-----------------|-----|-----|-----|-----|-----|-----|------|-----|
| FIN915SFH.008.M | 280 | 180 | 200 | 280 | 250 | 110 | Ø 12 | K10 |
| FIN915SFH.016.M | 280 | 180 | 200 | 280 | 250 | 110 | Ø 12 | K10 |
| FIN915SFH.032.M | 280 | 180 | 200 | 350 | 250 | 110 | Ø 12 | K10 |
| FIN915SFH.050.M | 330 | 180 | 200 | 360 | 300 | 110 | Ø 12 | K35 |
| FIN915SFH.075.M | 390 | 180 | 200 | 360 | 360 | 110 | Ø 12 | K35 |
| FIN915SFH.100.M | 400 | 230 | 250 | 360 | 370 | 170 | Ø 12 | K35 |
| FIN915SFH.150.M | 540 | 260 | 300 | 375 | 500 | 200 | Ø 12 | K50 |
| FIN915SFH.200.M | 540 | 260 | 300 | 460 | 500 | 200 | Ø 12 | K95 |
| FIN915SFH.250.M | 540 | 260 | 300 | 460 | 500 | 200 | Ø 12 | K95 |

Dimensions in mm



Via Edison 217 - 20019 Settimo Milanese (MI)
 Tel: +39 02 48910020 - Fax: +39 02 48910053
 www.finmotor.com - info@finmotor.com