

CARATTERISTICHE ELETTRICHE / Electric characteristics

| | |
|--|---|
| Tensione Nominale - <i>Nominal Voltage</i> | 0/480 V_{AC} - 50/60 Hz |
| Tensione di prova fase/fase - <i>Phase to phase test voltage</i> | 2600 V_{DC} (2 s) |
| Tensione di prova fase/terra - <i>Phase to ground test voltage</i> | 3100 V_{AC} - 50Hz (2 s) |
| Categoria climatica - <i>Climatic class</i> | -25 / +85 °C |

Sono disponibili su richiesta modelli con corrente nominale fino a 600A
Models available with current rating up to 600A



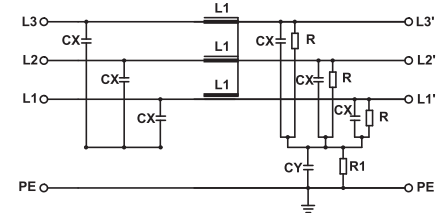
| FIN3756 | Corr. nominale / <i>Nominal current (A)</i> | | ΣC_x (μF) $\pm 10\%$ | C_y (nF) $\pm 10\%$ | L (mH) +50 -30% | Pot. diss. (W) <i>Power loss (W)</i> |
|---------------|---|---------|--|--------------------------|---------------------------|---|
| | TA=40°C | TA=50°C | | | | |
| .035.M | 35 | 33 | 9 | 1000 | 2,1 | 11 |
| .050.M | 50 | 48 | 9 | 1000 | 1,9 | 17 |

Corrente di fuga totale a 230 V fase verso terra a 50 Hz / 40°C
Total leakage current at 230 V phase to ground 50 Hz / 40°C

Nominale/Nominal <10mA
Condizione peggiore/Worst condition <80mA

SCHEMA ELETTRICO FIN3756

FIN3756 Electric diagram



Rete - *Line*

Carico - *Load*

DIMENSIONI MECCANICHE (mm) / Mechanical dimensions (mm)

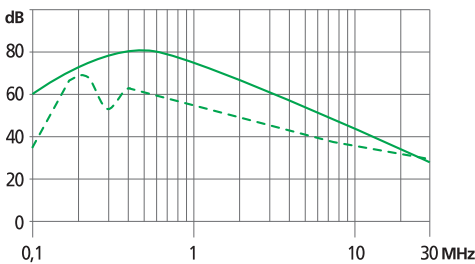
| FIN3756 | A | B | C | D | E | F | G | H | I | Peso Kg <i>Weight Kg</i> |
|---------------|-----|-----|-----|----|----|----|-----|----|-----|-----------------------------|
| .035.M | 130 | 145 | 160 | 70 | 75 | 50 | 6,5 | M5 | 0,8 | 1,1 |
| .050.M | 140 | 155 | 170 | 80 | 88 | 65 | 6,5 | M6 | 0,8 | 1,5 |

DATI DI COLLEGAMENTO (mm²) / Terminal Block (mm²)

| Morsetto <i>Terminals</i> | Cavo rigido <i>Rigid Cable</i> | Cavo flessibile <i>Flexible Cable</i> |
|------------------------------|-----------------------------------|--|
| K10 | 0.5-16 | 0.5 - 10 |
| K10 | 0.5-16 | 0.5 - 10 |

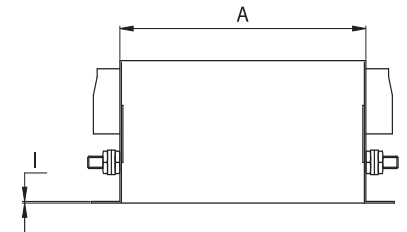
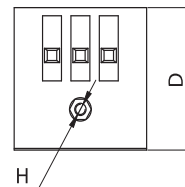
ATTENUAZIONE / Insertion loss

— Common Mode - - - Differential Mode



CUSTODIA

Case



ASSEMBLAGGIO

Assembling

