

CARATTERISTICHE ELETTRICHE / Electric characteristics

Tensione Nominale - <i>Nominal Voltage</i>	0/480 V_{ac} - 50/60 Hz
Tensione di prova fase/fase - <i>Phase to phase test voltage</i>	2600 V_{dc} (2 s)
Tensione di prova fase/terra - <i>Phase to ground test voltage</i>	3100 V_{ac} - 50Hz (2 s)
Categoria climatica - <i>Climatic class</i>	-25 / +85 °C

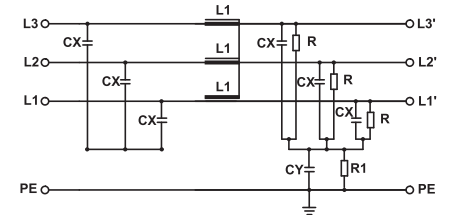
Sono disponibili su richiesta modelli con corrente nominale fino a 1500A
Models available with current rating up to 1500A



FIN3755	Corr. nomin TA=40°C	Nominal current (A) TA=50°C	ΣCx (μF) ±10%	Cy (nF) ±10%	L (mH) +50 -30%	Pot. diss. (W) Power loss (W)
.007.M	8	7	9	1000	2,7	3
.016.M	18	16	9	1000	2,1	4
.030.M	32	30	9	1000	1,9	11
.042.M	45	42	9	1000	1,6	15
.055.M	58	55	9	1000	1,4	19
.075.M	80	75	9	1000	1,2	25
.100.M	105	100	9	1000	1,1	42

SCHEMA ELETTRICO FIN3755

FIN3755 Electric diagram



Rete - Line

Carico - Load

Corrente di fuga totale a 230 V fase verso terra a 50 Hz / 40°C
Total leakage current at 230 V phase to ground 50 Hz / 40°C

Nominale/Nominal <10mA

Condizione peggiore/Worst condition <80mA

DIMENSIONI MECCANICHE (mm) / Mechanical dimensions (mm)

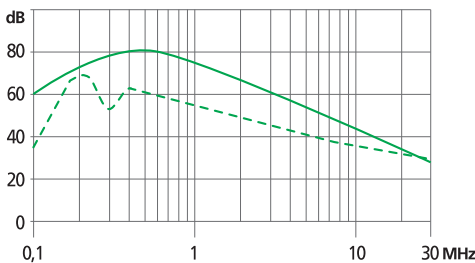
FIN3755	A	B	C	D	E	F	G	H	I	Peso Kg Weight Kg
.007.M	160	180	190	78	48	20	4	M5	1	1,1
.016.M	220	235	250	85	48	25	5	M5	1	1,5
.030.M	240	255	270	85	50	30	5	M6	1	2,1
.042.M	280	295	310	85	50	30	5	M6	1	2,7
.055.M	220	235	250	90	85	60	5	M6	1	3,1
.075.M	240	255	270	135	85	60	5	M8	1,5	3,6
.100.M	240	255	270	150	90	65	6	M10	1,5	4,2

DATI DI COLLEGAMENTO (mm²) / Terminal Block (mm²)

Morsetto Terminals	Cavo rigido Rigid Cable	Cavo flessibile Flexible Cable
K4	0.2 - 6	0.2 - 4
K4	0.2 - 6	0.2 - 4
K10	0.5 - 16	0.5 - 10
K10	0.5 - 16	0.5 - 10
K16	0.5 - 25	0.5 - 16
K25	6 - 35	10 - 25
K50	16 - 50	16 - 50

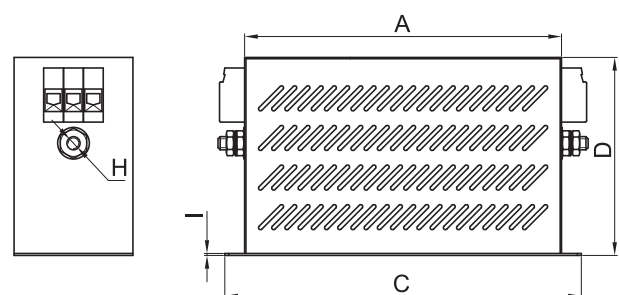
ATTENUAZIONE / Insertion loss

— Common Mode — Differential Mode



CUSTODIA

Case



ASSEMBLAGGIO

Assembling

