

CARATTERISTICHE ELETTRICHE / Electric characteristics

Tensione Nominale - <i>Nominal Voltage</i>	0/600 V_{ac} - 50/60 Hz
Tensione di prova fase/fase - <i>Phase to phase test voltage</i>	2700 V_{dc} (2 s)
Tensione di prova fase/terra - <i>Phase to ground test voltage</i>	3200 V_{dc} (2 s)
Categoria climatica - <i>Climatic class</i>	-25 / +85 °C



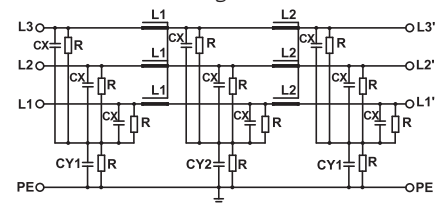
UL1283
CSA C22.2

* S.C.C.R. In according to UL508

FIN1900S	Rated current 40°C (50°C)	ΣCx (μF) $\pm 5\%$	Cy1 (nF) $\pm 5\%$	Cy2 (nF) $\pm 5\%$	L1/L2 (mH) $\pm 10\%$	S.C.C.R. (kA)	Max Fuse (200kA RK5 TD)	Pot. diss. (W) <i>Power loss (W)</i>
.042.M	50 (42)	60	1000	1000	1.1	5*	90A 600 Vac	32
.055.M	63 (55)	60	1000	1000	1.1	5*	90A 600 Vac	37
.070.M	80 (70)	60	1000	1000	1	10*	100A 600 Vac	52
.080.M	90 (80)	60	1000	1000	1	10*	110A 600 Vac	60
.100.M	110 (100)	60	1000	1000	0,9	10*	175A 600 Vac	92
.115.M	130 (115)	60	1000	1000	0,8	10*	110A 600 Vac	101
.150.M	175 (150)	60	1000	1000	0,7	10*	225A 600 Vac	115
.200.M	230 (200)	60	1000	1000	0,6	-	300A**	120

SCHEMA ELETTRICO FIN1900S

FIN1900S Electric diagram



Rete - Line

Carico - Load

Corrente di fuga totale a 230 V fase verso terra a 50 Hz / 40°C
Total leakage current at 230 V phase to ground 50 Hz / 40°C

Nominale/Nominal <15mA
Condizione peggiore/Worst condition <150mA

**Max 10kA should be provided by branch circuit fuse or a circuit breaker that clears the overcurrent fault within 3 cycles

DIMENSIONI MECCANICHE (mm) / Mechanical dimensions (mm)

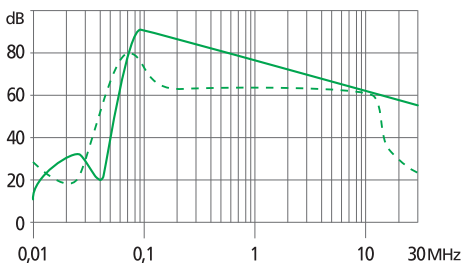
FIN1900S	A	B	V	V1	F	H	I	L	N	d	Peso Kg Weight Kg
.042.M	177	70	19	35	6	295	265	8	44	M6	3,4
.055.M	177	70	19	33	6	295	265	8	44	M6	3,5
.070.M/.080.M	205	80	28	38	8	390	340	12	53	M10	6
.100.M/.115.M	205	80	28	43	8	390	340	12	53	M10	7,1
.150.M/.200.M	220	105	28	50	8	420	370	12	78	M10	8

DATI DI COLLEGAMENTO (mm²) / Terminal Block (mm²)

Morsetto Terminals	Cavo rigido Rigid Cable	Cavo flessibile Flexible Cable
K10	0.5 - 16	0.5 - 10
K16	0.5 - 25	0.5 - 16
K25	6 - 35	10 - 25
K50	16 - 50	16 - 50
K95	25 - 95	35 - 95

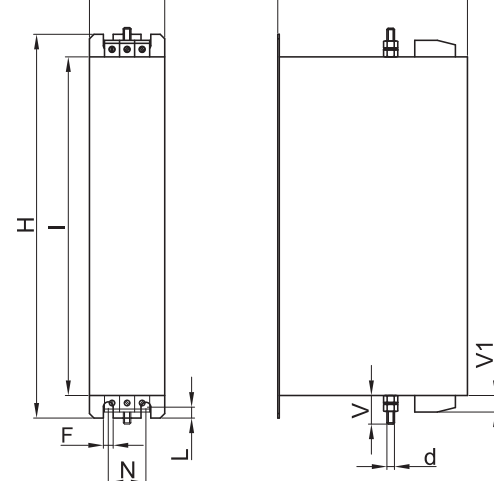
ATTENUAZIONE / Insertion loss

— Common Mode — Differential Mode



CUSTODIA

Case



ASSEMBLAGGIO ELETTRICO E MECCANICO

Assembling

