

CARATTERISTICHE ELETTRICHE / Electric characteristics

Tensione Nominale - Nominal Voltage	0/500 V_{ac} - 50/60 Hz
Tensione di prova fase/fase - Phase to phase test voltage	2600 V_{dc} (2 s)
Tensione di prova fase/terra - Phase to ground test voltage	3100 V_{dc} (2 s)
Categoria climatica - Climatic class	-25 / +85 °C



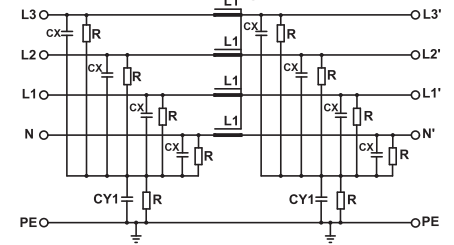
UL1283
CSA C22.2

* S.C.C.R. In according to UL508

FIN1740ESM	Rated current 40°C (50°C)	Σ Cx (µF) ± 5%	Cy1 (nF) ± 5%	Cy2 (nF) ± 5%	L1 (mH) ± 10%	S.C.C.R. (kA)	Max Fuse (200kA RK5 TD)	Pot. diss. (W) Power loss (W)
.010.M	10 (9)	9,6	100	100	1.8	5*	15A 600 Vac	5
.018.M	18 (16)	9,6	100	100	1.2	5*	45A 600 Vac	5
.036.M	36 (32)	9,6	100	100	1.1	5*	50A 600 Vac	18
.072.M	72 (64)	9,6	100	100	1	10*	90A 600 Vac	40
.100.M	100 (90)	9,6	100	100	0.7	10*	125A 600 Vac	102
.135.M	135 (120)	9,6	100	100	0.7	10*	175A 600 Vac	96
.180.M	180 (160)	9,6	100	100	0.6	10*	225A 600 Vac	98

SCHEMA ELETTRICO FIN1740ESM

FIN1740ESM Electric diagram



Rete - Line

Carico - Load

Corrente di fuga totale a 230 V fase verso terra a 50 Hz / 40°C
Total leakage current at 230 V phase to ground 50 Hz / 40°C

Nominale/Nominal <3mA

Condizione peggiore/Worst condition <15mA

DIMENSIONI MECCANICHE (mm) / Mechanical dimensions (mm)

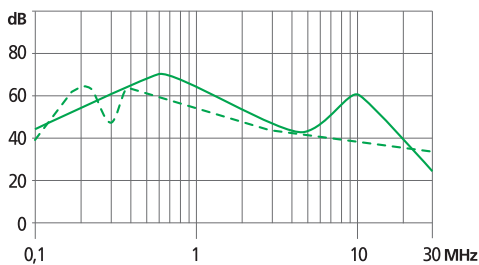
FIN1740ESM	A	B	V	V1	F	H	I	L	N	d	Peso Kg Weight Kg
.010.M	100	130	22.5	16	6.5	153	125	8.5	90	M6	1
.018.M	100	130	22.5	16	6.5	153	125	8.5	90	M6	1
.036.M	100	130	22.5	16	6.5	153	125	8.5	90	M6	1,1
.072.M	125	118	22.5	32.5	6.5	153	128	8.5	50	M6	1,6
.100.M	140	180	30	39	6.5	170	140	8.25	65	M10	3,4
.135.M	140	180	30	43	6.5	170	140	8.25	65	M10	4,5
.180.M	160	200	30	51.5	6.5	170	140	8.25	75	M10	4,8

DATI DI COLLEGAMENTO (mm²) / Terminal Block (mm²)

Morsetto Terminals	Cavo rigido Rigid Cable	Cavo flessibile Flexible Cable
K6	0.2 - 10	0.2 - 6
K6	0.2 - 10	0.2 - 6
K6	0.2 - 10	0.2 - 6
K16	0.5 - 25	0.5 - 16
K25	6 - 35	10 - 25
K50	16 - 50	16 - 50
K95	25 - 95	35 - 95

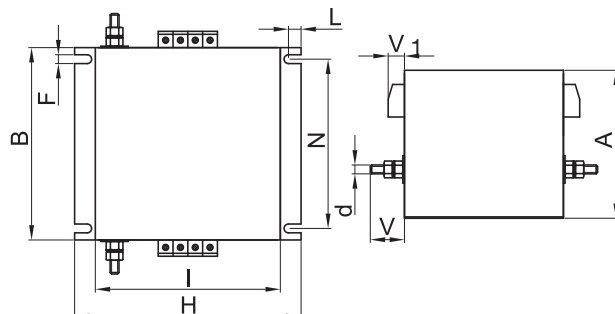
ATTENUAZIONE / Insertion loss

— Common Mode - - - Differential Mode



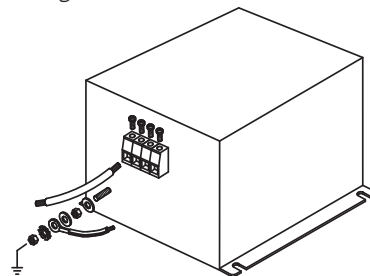
CUSTODIA FIN1740ESM .010.M / .018.M / .036.M

Case FIN1740ESM .010.M / .018.M / .036.M



ASSEMBLAGGIO

Assembling



CUSTODIA FIN1740ESM .072.M / .100.M / .135.M / .180.M

Case FIN1740ESM .072.M / .100.M / .135.M / .180.M

