



CARATTERISTICHE ELETTRICHE / Electric characteristics

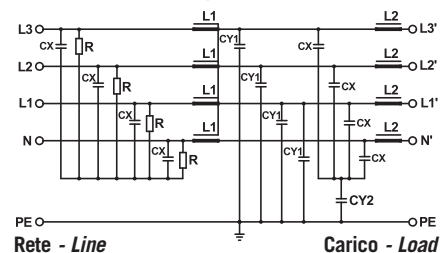
Tensione Nominale - Nominal Voltage	0/480 V_{ac} - 50/60 Hz
Tensione di prova fase/fase - Phase to phase test voltage	2600 V_{dc} (2 s)
Tensione di prova fase/terra - Phase to ground test voltage	3100 V_{dc} (2 s)
Categoria climatica - Climatic class	-25 / +85 °C



FIN1240	Corr nomin a 40°C (A) Nominal curr at 40°C (A)	ΣCx(μF) ±10%	Cy1 (nF) ±10%	Cy2 (nF) ±10%	L1 (mH) +50-30%	L2 (μH) ±20%	Pot diss (W) Pow loss (W)
.005.M	4X5	6,8	47	5	4X7	4X4	5
.010.M	4X10	6,8	47	5	4X5	4X4	7
.016.M	4X16	80	47	5	4X2	4X4	14
.030.M	4X30	80	47	5	4X2	4X4	11
.050.M	4X50	80	47	5	4X2	4X4	10
.080.M	4X80	80	47	5	4X1,8	4X4	35
.100.M	4X100	80	47	5	4X1,5	4X4	42
.150.M	4X150	80	47	5	4X1,3	4X2	74
.200.V	4X200	80	47	5	4X0,65	4X2	75
.360.B	4X360	80	47	5	4X0,25	—	96
.500.B	4X500	80	47	5	4X0,2	—	101
.750.B	4X750	80	47	5	4X0,2	—	103
.1000.B	4X1000	80	47	5	4X0,18	—	115

SCHEMA ELETTRICO FIN1240

FIN1240 Electric diagram



Corrente di fuga per fase a 230 V fase verso terra a 50 Hz / 40°C
Leakage current for phase at 230 V phase to ground 50 Hz / 40°C

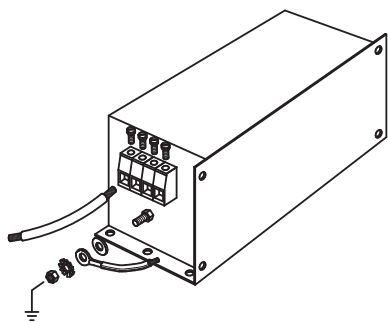
< 3mA

La Serie FIN1240 comprende Filtri Trifasi con neutro, con corrente nominale fino a 2000A.

FIN 1240 Series includes 3-phase + neutral filters with nominal current up to 2000A.

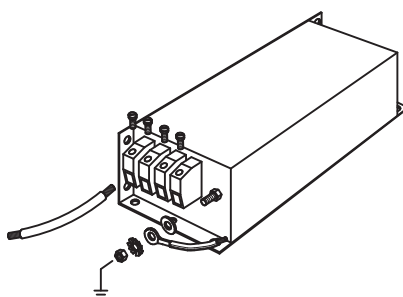
ASSEMBLAGGIO CUSTODIA 1/2

Case 1/2 assembling



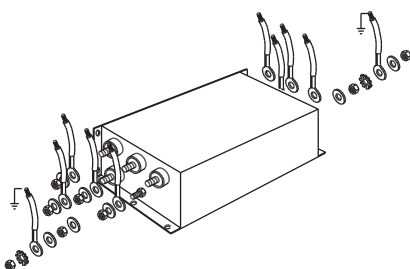
ASSEMBLAGGIO CUSTODIA 3/4

Case 3/4 assembling



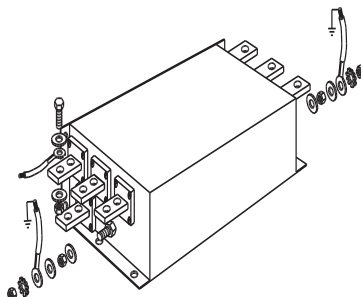
ASSEMBLAGGIO CUSTODIA 5

Case 5 assembling



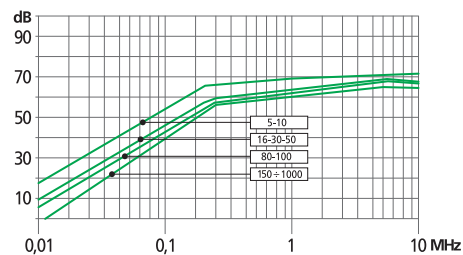
ASSEMBLAGGIO CUSTODIA 6/7/8/9

Case 6/7/8/9 assembling



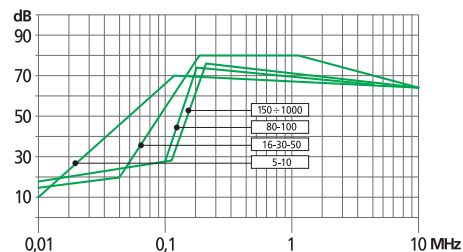
ATTENUAZIONE DI MODO COMUNE

Common Mode Attenuation



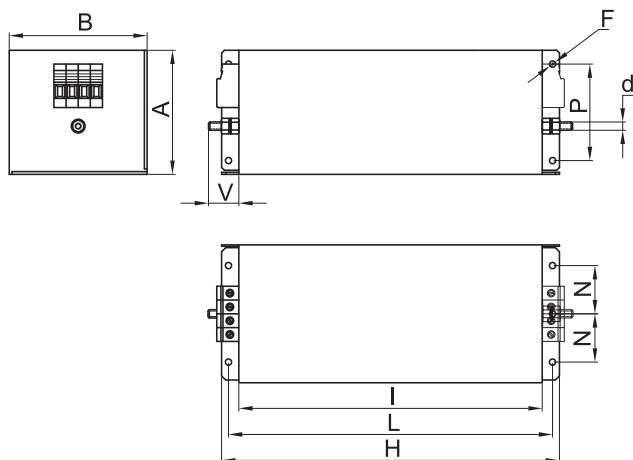
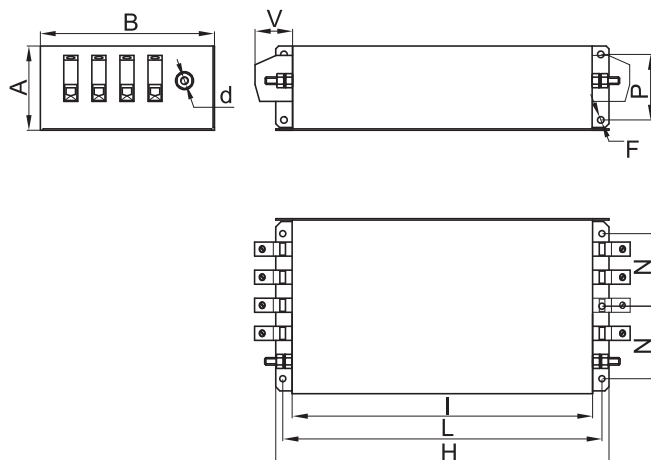
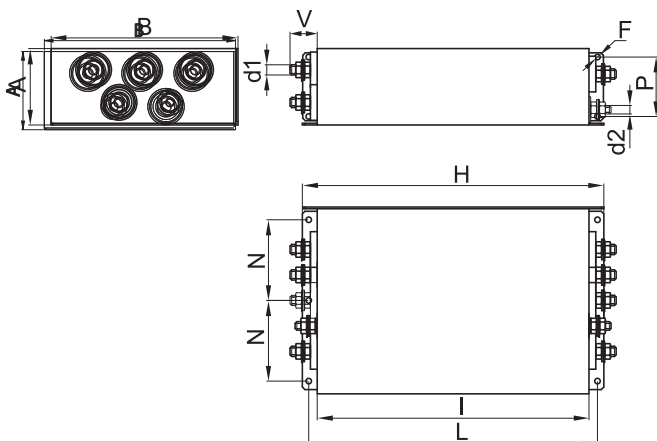
ATTENUAZIONE DI MODO DIFFERENZIALE

Differential Mode Attenuation



DIMENSIONI MECCANICHE (mm) / Mechanical dimensions (mm)

FIN1240	A	B	d (ø)	d1	d2	d3	V	F	H	I	L	N	P	Peso Kg Weight Kg	Custodia Case
.005.M	58	86	M4	—	—	—	19	4,5	186	160	176	30	40	1,5	1
.010.M	58	86	M4	—	—	—	19	4,5	186	160	176	30	40	1,5	1
.016.M	90	100	M5	—	—	—	19	4,5	246	220	235	35	70	2	2
.030.M	90	100	M5	—	—	—	19	4,5	246	220	235	35	70	2,5	2
.050.M	90	100	M6	—	—	—	19	4,5	246	220	235	35	70	3	2
.080.M	90	186	M8	—	—	—	38	6,5	356	320	340	77,5	70	12	3
.100.M	90	186	M8	—	—	—	38	6,5	356	320	340	77,5	70	13	3
.150.M	90	220	M10	—	—	—	42	6,5	356	320	340	95	70	15	4
.200.V	90	220	—	M10	M10	—	30	6,5	356	320	340	95	70	20	5
.360.B	130	230	8,5	M10	10	25	42	6,5	420	380	400	100	100	27	6
.500.B	130	230	10,5	M10	15	30	48	6,5	510	450	480	100	100	33,5	7
.750.B	160	250	13,5	M12	20	40	94	8,5	510	450	480	100	110	37	8
.1000.B	180	350	13,5	M12	20	60	97	8,5	610	550	580	150	130	55	9

CUSTODIA 1/2
Case 1/2

CUSTODIA 3/4
Case 3/4

CUSTODIA 5
Case 5

CUSTODIA 6/7/8/9
Case 6/7/8/9
